



First Solar GmbH, Amelia-Mary-Earhart Str. 8, 60549 Frankfurt (Main)

First Solar GmbH  
Amelia-Mary-Earhart Straße 8  
60549 Frankfurt  
Phone: +49 69 643 5772 00

## Compatibility Letter: Kirac Metal & Value Impex

---

October 19, 2022

KIRAC METAL URUN. SAN. VE TIC. LTD STI.  
OSB Şeh Blv. No: 21,  
26110 Eskişehir  
Turkey

To whom it may concern,

First Solar has received the Kirac Metal Structure & Clamp Technical Drawings (enclosed herein for reference) and views the clamp specifications described therein as compatible with First Solar Series 6 Plus modules, provided the specific design loads do not exceed  $\pm 1600$  Pa. First Solar has only reviewed the drawings and description for the module fixation at this time.

First Solar only warrants its modules in accordance with the First Solar Module Warranty Terms & Conditions, which require that the modules and mounting system are installed, operated and serviced in accordance with the applicable First Solar User Guide.

All structural aspects of the system are the responsibility of Kirac Metal & Value Impex. In any case, where the racking system and/or clamps is/are found to be the cause of module damage, First Solar will not be responsible for any such damage.

This review is based upon the submitted configuration specifications attached to this letter. Any changes to the mounting configuration specifications or project specific calculations will require a separate analysis and this compatibility letter shall not apply to any such changes.

---

**Leandro Netz**

Sr. Manager – Post Sales Operations, EMEA & APAC

/enclosure: Attachment: Kirac Metal Structure & Clamp Technical Drawings: 2DPX16 25D KOMPLE UNITE-660W\_FIRST;  
2DPX16 25D TASIYICI GRUP-660W\_FIRST; 5OLIK\_ORTA\_TUTUCU; 1134 H35 KENAR TUTUCU\_REV1

---

Geschäftsführung: Adam Smith

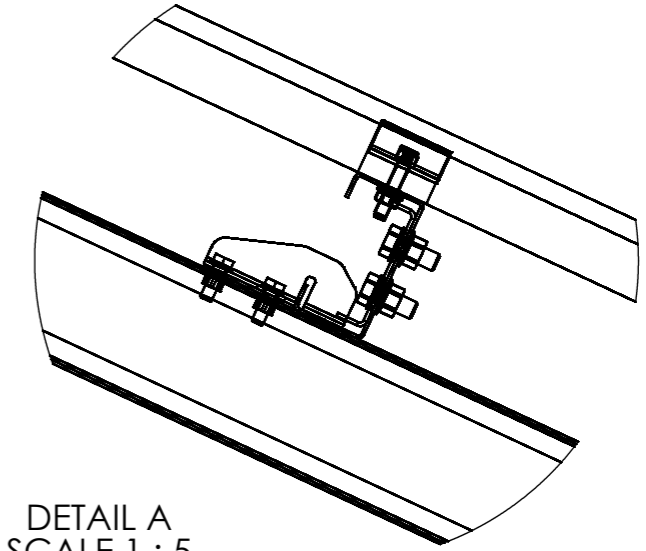
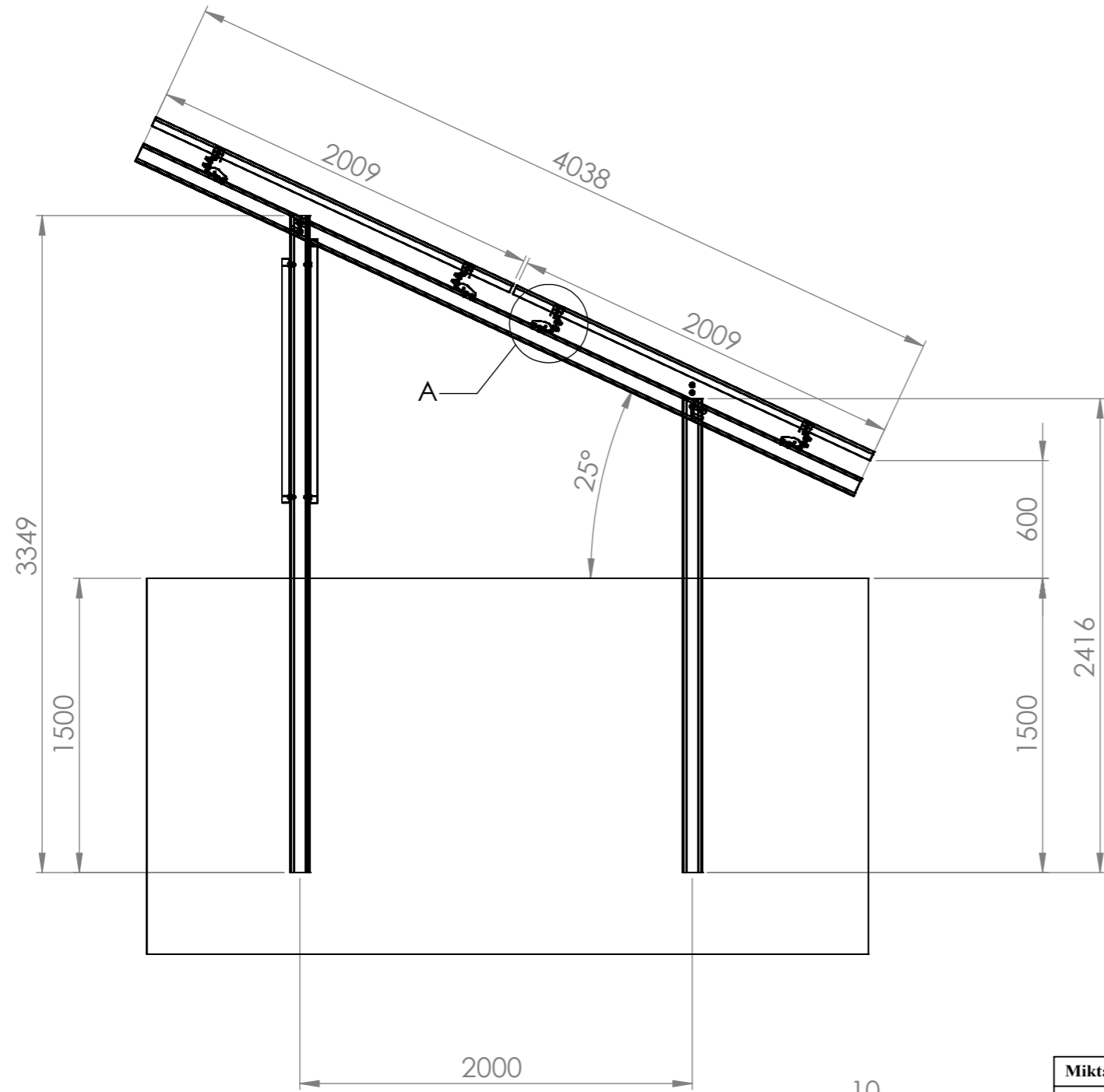
Amtsgericht Frankfurt am Main HRB-Nr. 115153 – Steuernummer: 26/655/030460 – USt-IdNr. DE 813 787 782

Sitz der Gesellschaft: Frankfurt am Main

Bankverbindung: JP Morgan Frankfurt am Main – IBAN: DE02501108006161507824 – BIC: CHASDEFX (Euro Transaction)

JP Morgan Frankfurt am Main – IBAN: DE45001108006161302671 – BIC: CHASDEFX (USD Transaction)

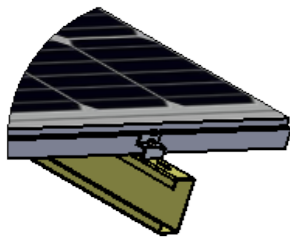
[www.firstsolar.com](http://www.firstsolar.com)



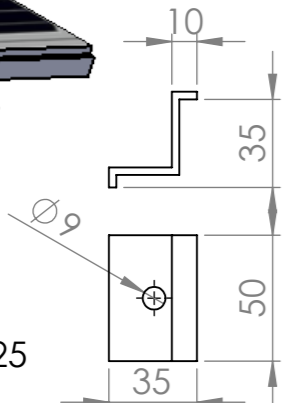
DETAIL A  
SCALE 1 : 5

NOTE: Quantities are for 1 table.

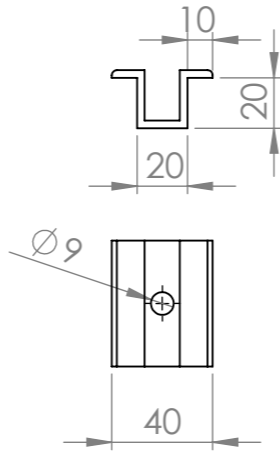
COMPONENT	NAME	METARIAL	COATING	LENGTH (mm)	QUANTITY (pcs.)
FRONT COLUMN	CC100x50x20x3	ST37	HDG	2416	7
BACK COLUMN	CC100x50x20x3	ST37	HDG	3349	7
BEAM	CC100x47x17x2,5	ST37	HDG	4038	7
PURLIN-1	CC100x50x18x2	ST37	HDG	6053,5	8
PURLIN-2	CC100x50x18x2	ST37	HDG	4052,5	8
SUPPORT	U40x40x2	ST37	HDG	3280	6
PURLIN CONNECTION PART	U40x40x2,5	ST37	HDG	101	28
PURLIN CONNECTION ADDITIONAL PART	U84x20x2	ST37	HDG	250	8
END CLAMP	H35 L50 6063-T6				8
MID CLAMP	L50 6063-T6				60
BOLTS M8X40	M8x40 BOLT DIN912				68
BOLTS M8X25	M8x25 BOLT DIN33				56
FLANGED NUT M8	M8 FLANGED NUT DIN6923				124
WASHER M8	M8 WASHER DIN125				56
BOLTS M12X30	M12x30 BOLT DIN933				92
FLANGED NUT M12	M12 FLANGED NUT DIN6923				92
WASHER M12	M12 WASHER DIN125				92



DETAIL C  
SCALE 2 : 25

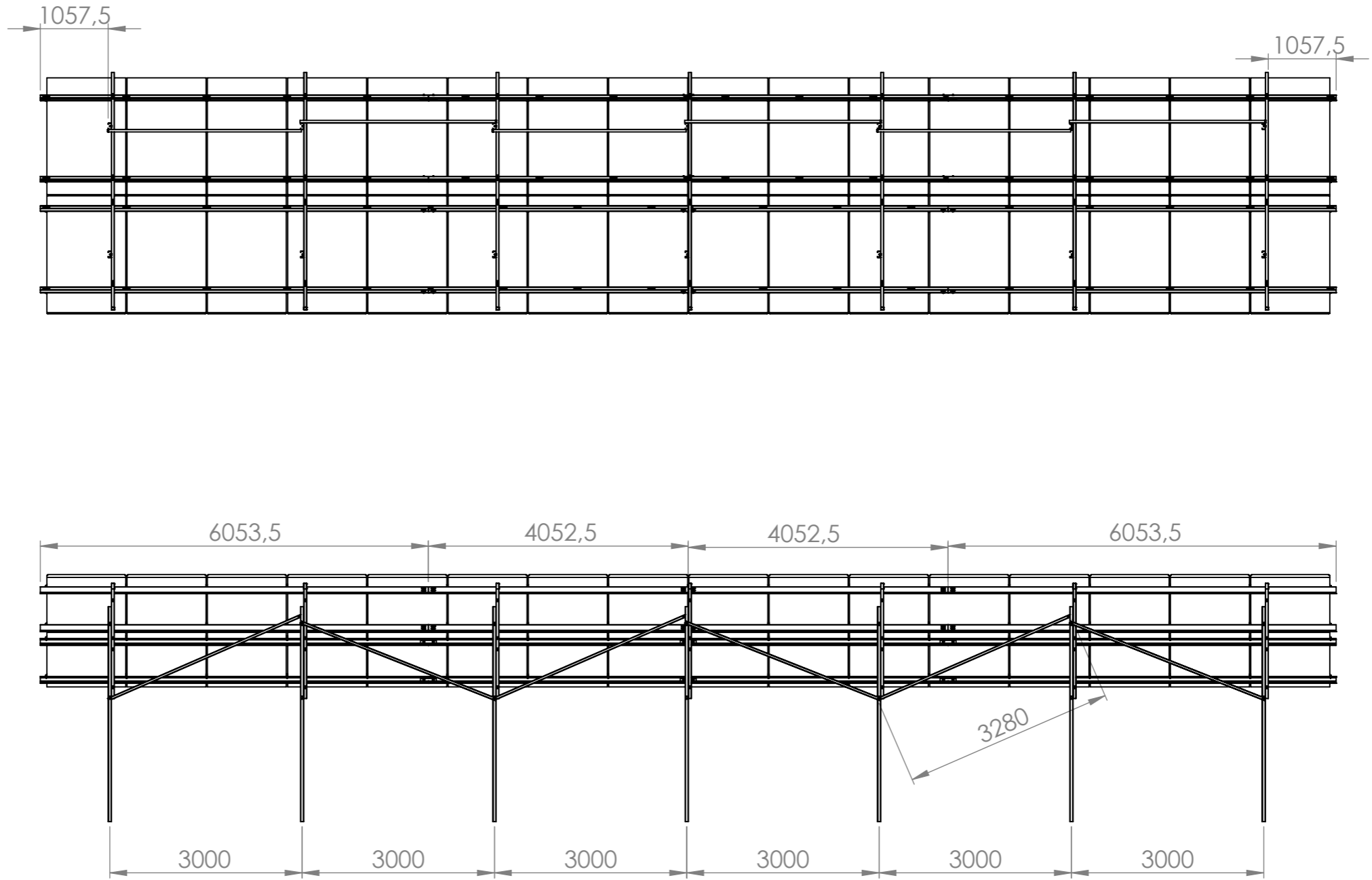


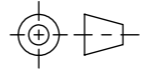



DETAIL D  
SCALE 1 : 5

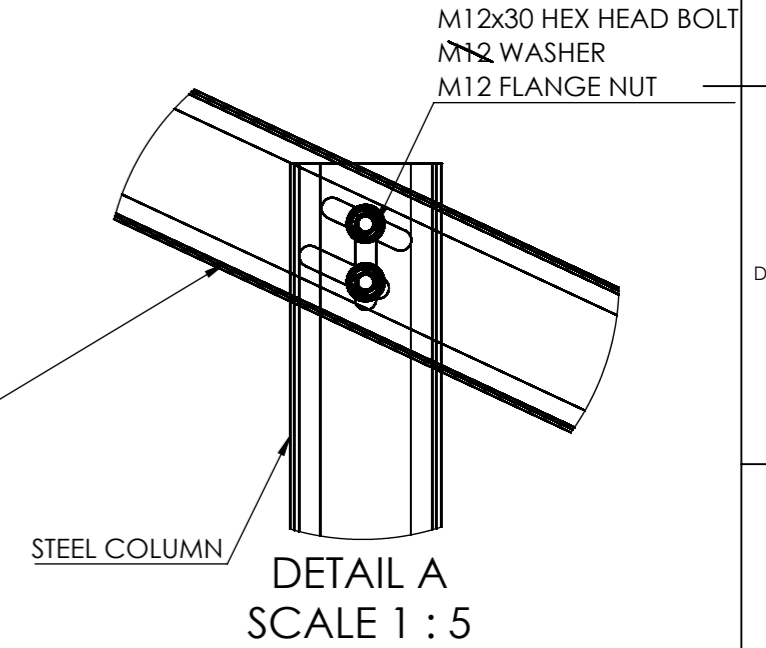
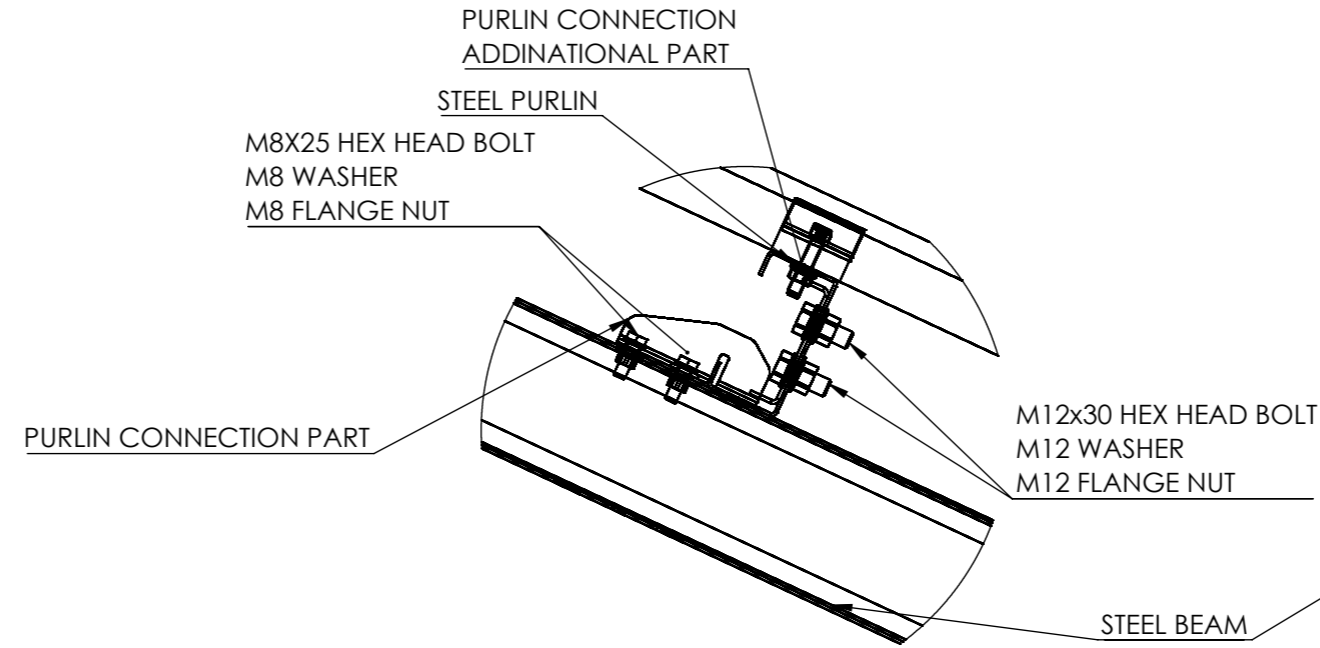
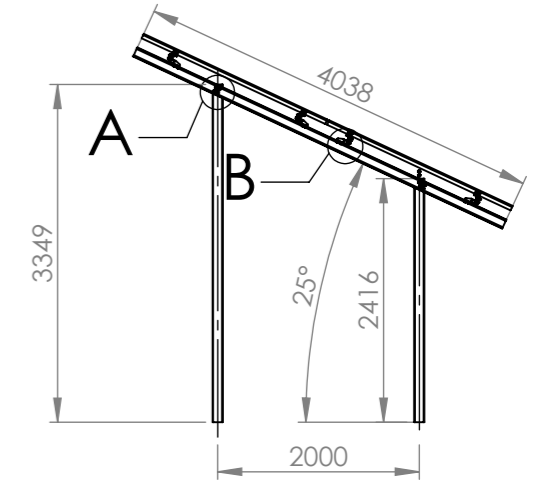
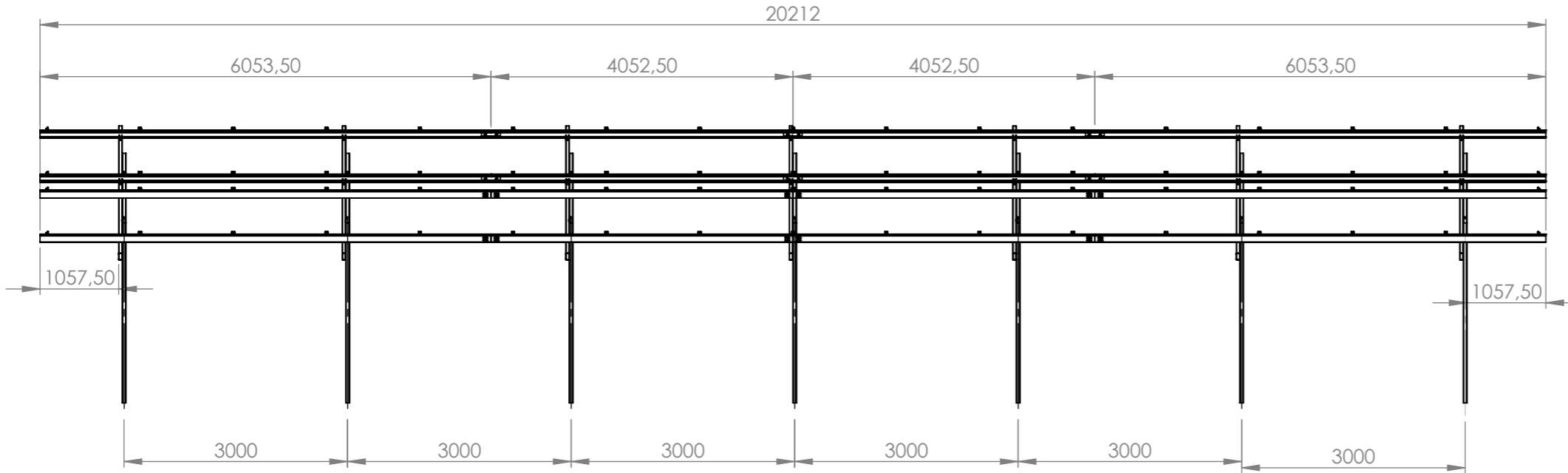


Miktar/ Qnt. (ad./pcs.) :	Kalınlık/ Thic. (mm) :	Yüzey Alanı /Surface Area (mm <sup>2</sup> ) :	
Ağırlık/ Weight (gr) :	Malzeme/ Mat. :	Yüzey İşlem/ Surface Trea.	
<b>DIN: 6 ISO: F</b>	Parça Adı/ Part Name : 2DPX16 25D KOMPLE UNITE-660W_FIRST	Toz Boya/ Powder Coating	-
TOLERANS VERİLMEDİĞİ TAKDİRDE UYGULANACAK GENEL TOLERANS ISO 2768-m GENERAL TOLERANCE ISO 2768-m	Proje No/ Project No : -	Yaş Boya/ Liquid Coating	-
RESİMDEN ÖLÇEREK DEĞER ALMAYINIZ. DO NOT SCALE DRAWING. CAD ÇİZİMDİR. RESİMDE EL İLE DEĞİŞİKLİK YAPMAYINIZ. CAD DRAWING. DO NOT APPLY MANUAL REVISION TO THIS DRAWING.	Parça No/ Part No : KM01-Y9002-C-00	Satine/ Satination	-
Bu resim firmanın özel evrakı olup; KIRAC METAL ÜRÜNLERİ SAN. TIC. LTD. ŞTİ'nin izni olmadan çoğaltılamaz, üçüncü şahıslara verilemez, değişiklik yapılamaz. All proprietary rights reserved KIRAC METAL ÜRÜNLERİ SAN. TIC. LTD. ŞTİ. This drawing shall not be reproduced or in any way utilized for the manufacture at the component or unit here in illustrated and must not be released to other parties, without written consent.	Ad Soyad/ Name Surname	Tarih/ Date	İmza/ Signature
	Çizen/ Draft : Nazlı ÖZOĞUL	2.06.2022	
	Kontrol/ Check : Serkan GÜLDOĞAN	2.06.2022	
	Onay/ Appr.		
	Kaplama/ Coating		
	Sıcak Daldırma/ Hot Dip Gal.		-
	Elektro galvaniz/ Electro Gal.		-
	Kalay Kap. / Tin Plating		-
	Sayfa No/ : 1/1 Sheet No		Değ. No/ : 00 Rev. No
	Ölçek: 1:30		





<b>Miktar/ Qnt. (ad./pcs.) :</b>		<b>Kalınlık/ Thic. (mm) :</b>		<b>Yüzey Alanı /Surface Area (mm<sup>2</sup>) :</b>		
<b>Ağırlık/ Weight (gr) :</b>		<b>Malzeme/ Mat. :</b>		<b>Yüzey İşlem/ Surface Trea.</b>		
 <b>DIN: 6</b> <b>ISO: F</b>		<b>Parça Adı/ Part Name</b> : 2DPX16 25D KOMPLE UNITE-660W_FIRST		Toz Boya/ Powder Coating		-
		<b>Proje No/ Project No</b> : -		Yaş Boya/ Liquid Coating		-
		<b>Parça No/ Part No</b> : KM01-Y9002-C-00		Satine/ Satination		-
<small>TOLERANS VERİLMEDİĞİ TAKDİRDE UYGULANACAK GENEL TOLERANS ISO 2768-m GENERAL TOLERANCE ISO 2768-m</small> <small>RESİMDEN ÖLÇEREK DEĞER ALMAYINIZ. DO NOT SCALE DRAWING.</small> <small>CAD ÇİZİMDİR. RESİMDE EL İLE DEĞİŞİKLİK YAPMAYINIZ. CAD DRAWING. DO NOT APPLY MANUAL REVISION TO THIS DRAWING.</small>		<b>Ad Soyad/ Name Surname</b>	<b>Tarih/ Date</b>	<b>İmza/ Signature</b>	<b>Kaplama/ Coating</b>	
		<b>Çizen/ Draft</b> : Nazlı ÖZOĞUL	2.06.2022		Sıcak Daldırma/ Hot Dip Gal.	-
		<b>Kontrol/ Check</b> : Serkan GÜLDOĞAN	2.06.2022		Elektro galvaniz/ Electro Gal.	-
		<b>Onay/ Appr.</b>			Kalay Kap. / Tin Plating	-
<small>Bu resim firmanın özel evrakı olup; KIRAC METAL ÜRÜNLERİ SAN. TIC. LTD. ŞTİ'nin izni olmadan çoğaltılamaz, üçüncü şahıslara verilemez, değişiklik yapılamaz.</small> <small>All proprietary rights reserved KIRAC METAL ÜRÜNLERİ SAN. TIC. LTD. ŞTİ. This drawing shall not be reproduced or in any way utilized for the manufacture of the component or unit here in illustrated and must not be released to other parties, without written consent.</small>		  		<b>Sayfa No/ Sheet No</b> : 1/1	<b>Değ. No/ Rev. No</b> : 00	<b>Ölçek:</b> 1:50

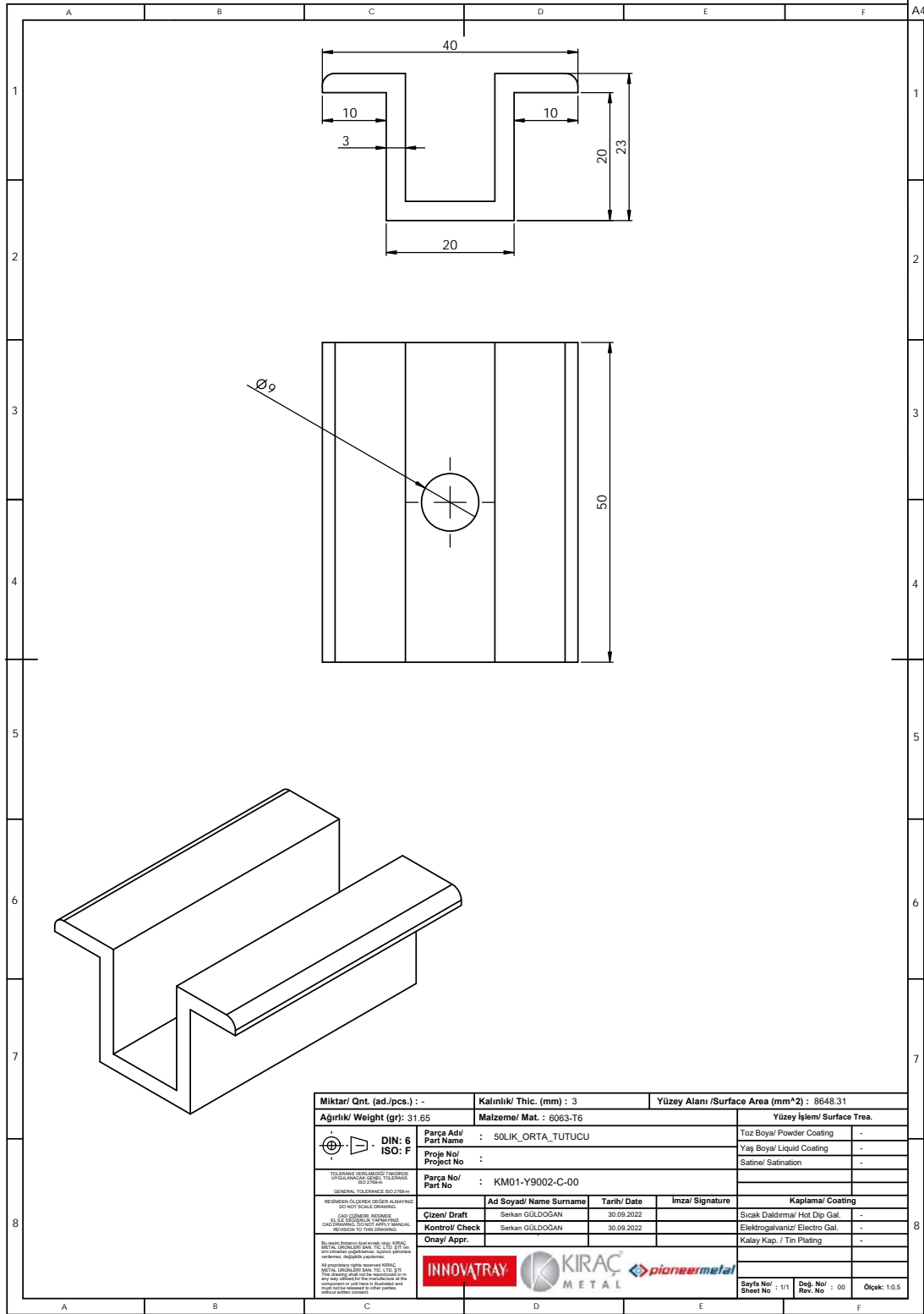


DETAIL B  
SCALE 1 : 5

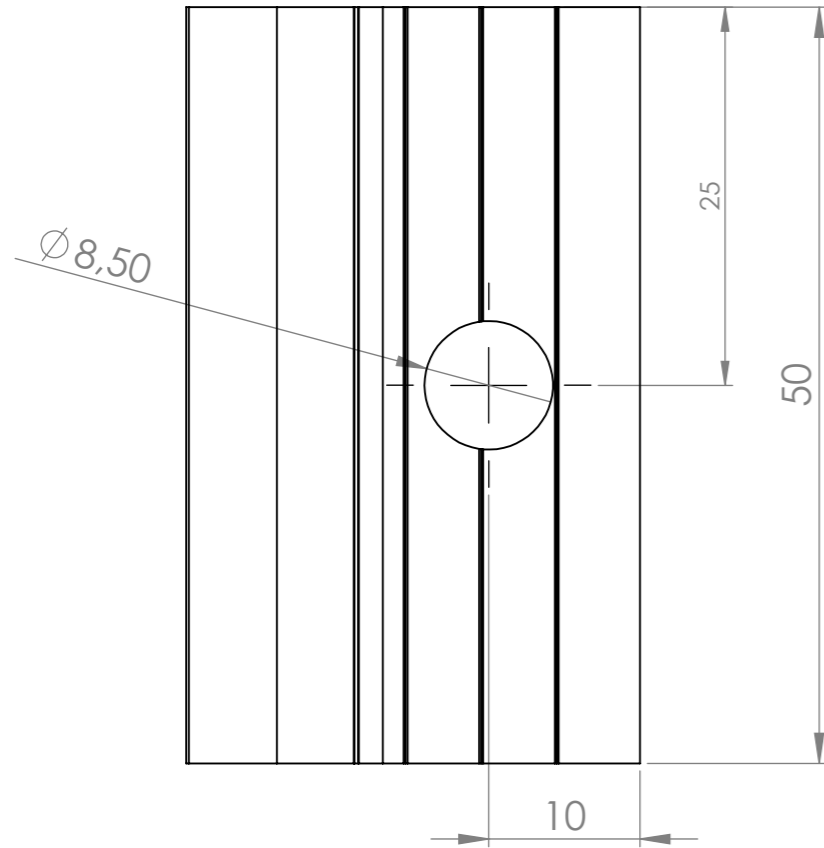
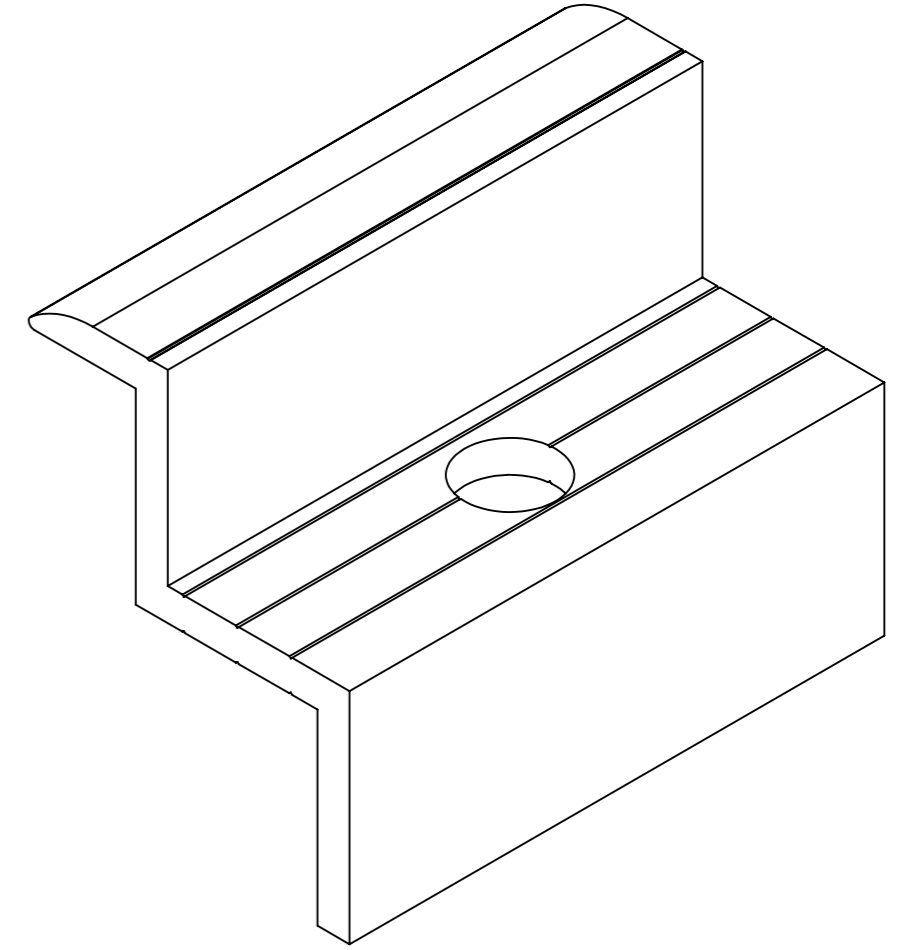
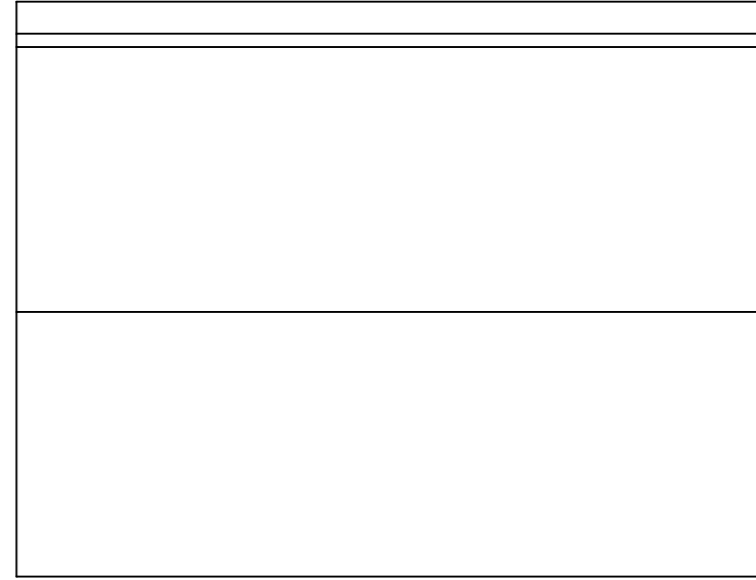
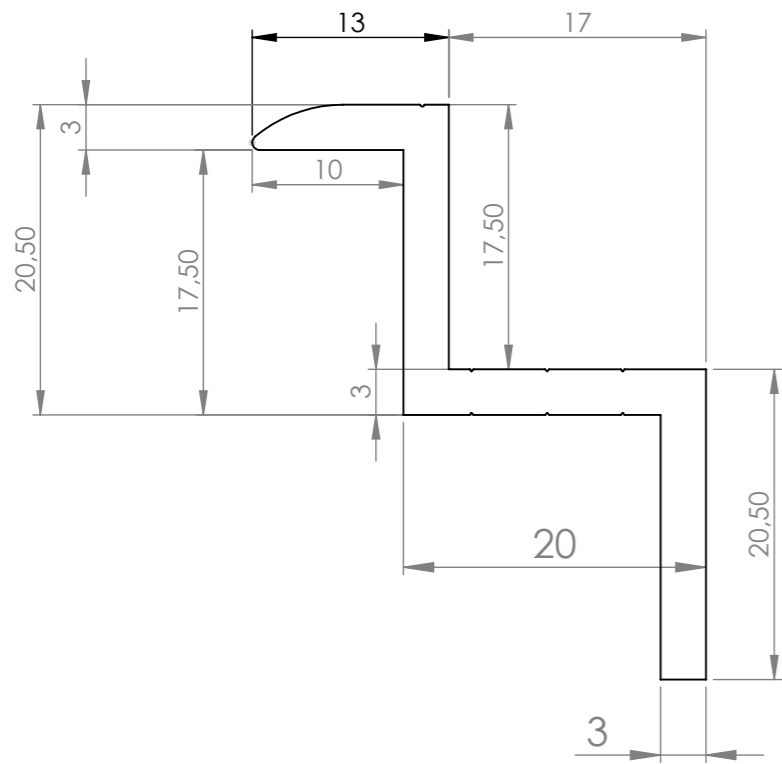
DETAIL A  
SCALE 1 : 5

<b>Miktar/ Qnt. (ad./pcs.) :</b>	<b>Kalınlık/ Thic. (mm) :</b>	<b>Yüzey Alanı /Surface Area (mm<sup>2</sup>) :</b>		
<b>Ağırlık/ Weight (gr):</b> 4464370.30	<b>Malzeme/ Mat. :</b>	<b>Yüzey İşlem/ Surface Trea.</b>		
<b>DIN: 6</b> <b>ISO: F</b>	<b>Parça Adı/ Part Name :</b> 2DPX16 25D TASIYICI GRUP-660W_FIRST	Toz Boya/ Powder Coating	-	
	<b>Proje No/ Project No :</b>	Yaş Boya/ Liquid Coating	-	
<small>TOLERANS VERİLMEYENDE TAKDIRDE UYGULANACAK GENEL TOLERANS ISO 2768-m</small> <small>GENERAL TOLERANCE ISO 2768-m</small>	<b>Parça No/ Part No :</b> KM01-Y9002-C-00	Satine/ Satination	-	
	<b>RESİMDEN ÖLÇEREK DEĞER ALMAYINIZ. DO NOT SCALE DRAWING.</b>	<b>Ad Soyad/ Name Surname</b>	<b>İmza/ Signature</b>	
<b>CAD ÇİZİMDİR. RESİMDE EL İLE DEĞİŞİKLİK YAPMAYINIZ. CAD DRAWING. DO NOT APPLY MANUAL REVISION TO THIS DRAWING.</b>	<b>Çizen/ Draft</b>	Nazlı ÖZOĞUL	25.05.2022	
<small>Bu resim firmanın özel evrakı olup; KIRIĞAÇ METAL ÜRÜNLERİ SAN. TIC. LTD. ŞTİ'nin izni olmadan çoğaltılamaz, üçüncü şahıslara verilemez, dağıtılamaz.</small> <small>All propriety rights reserved KIRIĞAÇ METAL ÜRÜNLERİ SAN. TIC. LTD. ŞTİ. This drawing shall not be reproduced or in any way utilized for the manufacture at the component or unit here in illustrated and must not be released to other parties, without written consent.</small>	<b>Kontrol/ Check</b>	Serkan GÜLDOĞAN	25.05.2022	
	<b>Onay/ Appr.</b>			
			<b>Kaplama/ Coating</b>	
			Sıcak Daldırma/ Hot Dip Gal.	-
			Elektro galvaniz/ Electro Gal.	-
			Kalay Kap. / Tin Plating	-
			<b>Sayfa No/ Sheet No</b> : 1/1	<b>Değ. No/ Rev. No</b> : 00
				<b>Ölçek:</b> 1:75





Miktar/ Qnt. (ad./pcs.) : -	Kalınlık/ Thic. (mm) : 3	Yüzey Alanı /Surface Area (mm <sup>2</sup> ) : 8648.31	
Ağırık/ Weight (gr): 31.65	Malzeme/ Mat. : 6063-T6	Yüzey İşlem/ Surface Trea.	
	Parça Adı/ Part Name : 50LIK_ORTA_TUTUCU	Toz Boya/ Powder Coating -	
	Proje No/ Project No :	Yag Boya/ Liquid Coating -	
<small>TOLERANS DÜZLEMİĞİ İÇİNDE YERİNE KÖRGE ÇİZİMİ YAPILMALI. GENEL TOLERANS ISO-2768-mS</small> <small>RESİMİN ÖLÇÜLERİ ÇİZİM ALANINDA DOĞRUK ÇİZİMLERİNE GÖRE ÇİZİLMELİDİR.</small> <small>ÇİZİMDE YERİNE KÖRGE ÇİZİMİ YAPILMALI. GENEL TOLERANS ISO-2768-mS ÇİZİMİNE GÖRE ÇİZİLMELİDİR.</small> <small>ALL DIMENSIONS GIVEN UNLESS OTHERWISE SPECIFIED.</small>	Parça No/ Part No : KM01-Y9002-C-00	Satın/ Satination -	
	Ad Soyadı/ Name Surname	Tarih/ Date	İmza/ Signature
Çizen/ Draft	Serkan GÜLDOĞAN	30.09.2022	Sıcak Daldırma/ Hot Dip Gal. -
Kontrol/ Check	Serkan GÜLDOĞAN	30.09.2022	Elektro galvaniz/ Electro Gal. -
Onay/ Appr.			Kalay Kap. / Tin Plating -
Sayfa No/ Sheet No : 1/1	Değ. No/ Rev. No : 00	Ölçek/ 1:0.5	



<b>Miktar/ Qnt. (ad./pcs.) : 1</b>	<b>Kalınlık/ Thic. (mm) : 3</b>	<b>Yüzey Alanı /Surface Area (mm<sup>2</sup>) : 7085.92</b>	
<b>Ağırlık/ Weight (gr): 25.26</b>	<b>Malzeme/ Mat. : 6063-T6</b>	<b>Yüzey İşlem/ Surface Trea.</b>	
<b>DIN: 6</b> <b>ISO: F</b>	<b>Parça Adı/ Part Name</b> : 1134 H35 KENAR TUTUCU_REV1	Toz Boya/ Powder Coating	-
	<b>Proje No/ Project No</b> :	Yaş Boya/ Liquid Coating	-
	<b>Parça No/ Part No</b> : KM01-Y9002-C-00	Satine/ Satination	-
<small>TOLERANS VERİLMEYENDE TAKİRDE UYGULANACAK GENEL TOLERANS ISO 2768-m</small> <small>GENERAL TOLERANCE ISO 2768-m</small>	<b>Ad Soyad/ Name Surname</b>	<b>Tarih/ Date</b>	<b>İmza/ Signature</b>
<small>RESİMDEN ÖLÇEREK DEĞER ALMAYINIZ DO NOT SCALE DRAWING.</small> <small>CAD ÇİZİMDİR. RESİMDE EL İLE DEĞİŞİKLİK YAPMAYINIZ CAD DRAWING. DO NOT APPLY MANUAL REVISION TO THIS DRAWING.</small>	<b>Çizen/ Draft</b>	Serkan GÜLDOĞAN	12.10.2022
<b>Onay/ Appr.</b>	<b>Kontrol/ Check</b>	Serkan GÜLDOĞAN	12.10.2022
<b>Kaplama/ Coating</b>	Sıcak Daldırma/ Hot Dip Gal. -		
	Elektro galvaniz/ Electro Gal. -		
	Kalay Kap. / Tin Plating -		
<b>Sayfa No/ Sheet No</b> : 1/1	<b>Değ. No/ Rev. No</b> : 00	<b>Ölçek: 2:1</b>	



Bu resim firmanın özel evrakı olup; KIRAC METAL ÜRÜNLERİ SAN. TIC. LTD. ŞTİ'nin izni olmadan çoğaltılamaz, üçüncü şahıslara verilemez, değiştirilemez.  
All copyrights rights reserved KIRAC METAL ÜRÜNLERİ SAN. TIC. LTD. ŞTİ. This drawing shall not be reproduced or in any way utilized for the manufacture of the component or unit here in illustrated and must not be released to other parties, without written consent.